

GELORUP

39 BANKSIA DRIVE

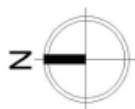
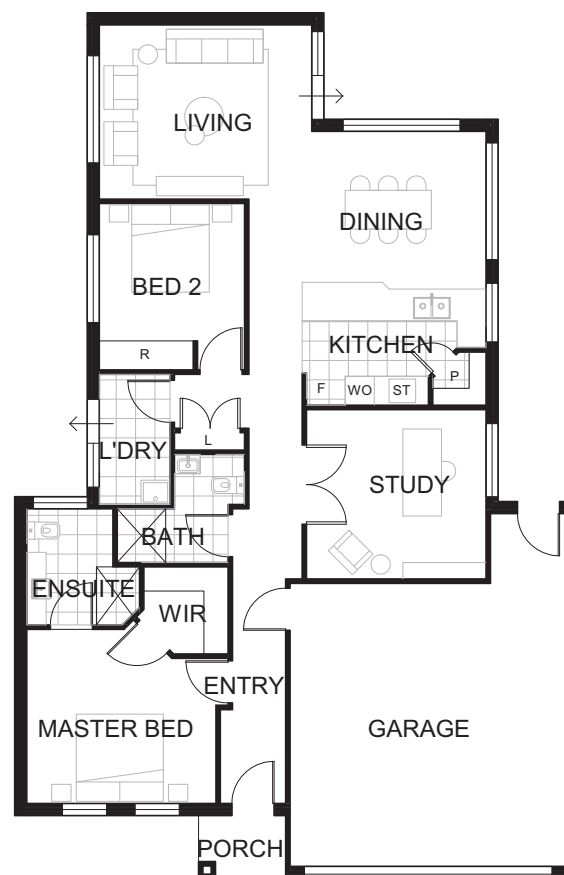
HOUSE FEATURES

- Newly Refurbished throughout.
- Rear Patio - S/E facing.
- New Timber Floors.
- Solar Panels.
- Ducted Reverse Cycle Air-Conditioning.

APPROX DIMENSIONS

ENTRY	1.4m x 1.9m
LIVING	3.6m x 4.4m
KITCHEN	3.7m x 1.6m
DINING	3.7m x 3.0m
LIVING	4.4m x 3.6m
STUDY	3.7m x 3.5m
MASTER BED	3.9m x 3.6m
WIR	1.1m x 1.2m
ENSUITE	2.4m x 1.8m
BATH	1.8m x 1.3m
BED 2	3.4m x 3.0m
LAUNDRY	1.5m x 2.7m
GARAGE	5.7m x 5.9m
TOTAL	162m ²

502 - 546 Bussell Highway,
Busselton WA 6280
www.novavillage.com.au



not to scale

KEY

WIR	Walk in robe	ST	Gas stove
S	Storage	R	Robe
L	Linen cupboard	P	Pantry
WO	Wall oven	F	Fridge recess



MORE LIKE A RESORT THAN A RETIREMENT VILLAGE