

## LEEWIN 162 MARRI DRIVE

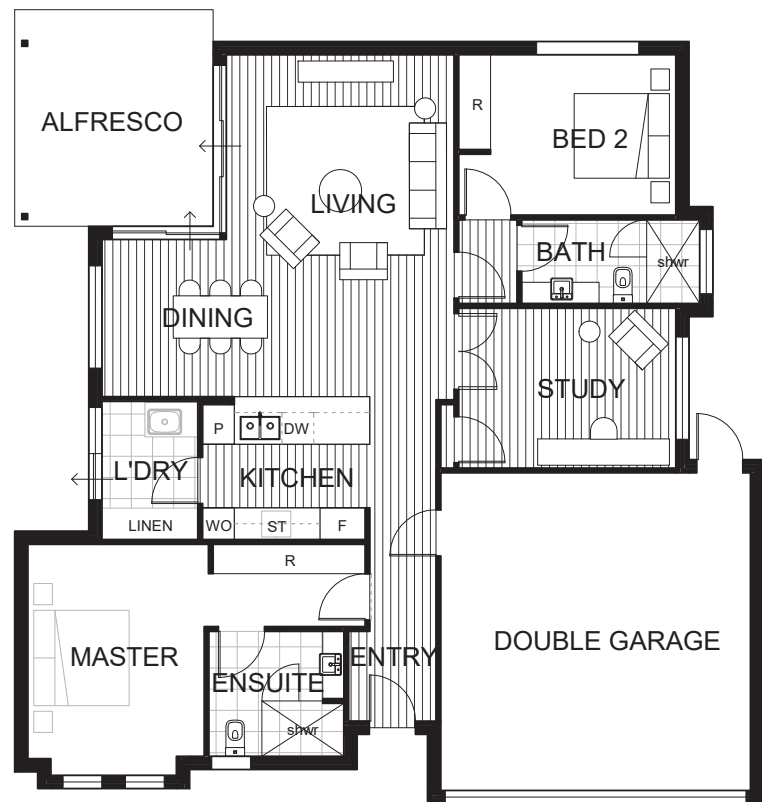
### HOUSE FEATURES

- Stylish two bedroom and study home with timber flooring, reverse cycle air conditioning, high quality fixtures and finishes.
- Sheltered north facing courtyard adjacent to dining and living areas.
- Spacious kitchen with breakfast bar.

### APPROX DIMENSIONS

ENTRY	1.6m x 1.7m
LIVING	4.3m x 6.4m
KITCHEN	3.2m x 2.7m
DINING	3.0m x 2.7m
ALFRESCO	3.5m x 4.0m
STUDY	4.1m x 3.0m
MASTER	3.3m x 4.0m
ENSUITE	2.5m x 2.4m
BATH	3.3m x 1.6m
BED 2	3.5m x 3.0m
LAUNDRY	1.7m x 2.6m
GARAGE	5.8m x 5.9m
TOTAL	165m <sup>2</sup>

502 - 546 Bussell Highway,  
Busselton WA 6280  
[www.novavillage.com.au](http://www.novavillage.com.au)



not to scale

### KEY

<b>WIR</b>	Walk in robe	<b>ST</b>	Gas stove
<b>S</b>	Storage	<b>DW</b>	Dishwasher
<b>L</b>	Linen cupboard	<b>P</b>	Pantry
<b>WO</b>	Wall Oven	<b>F</b>	Fridge recess



MORE LIKE A RESORT THAN A RETIREMENT VILLAGE