



## BUSSELL

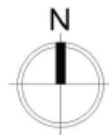
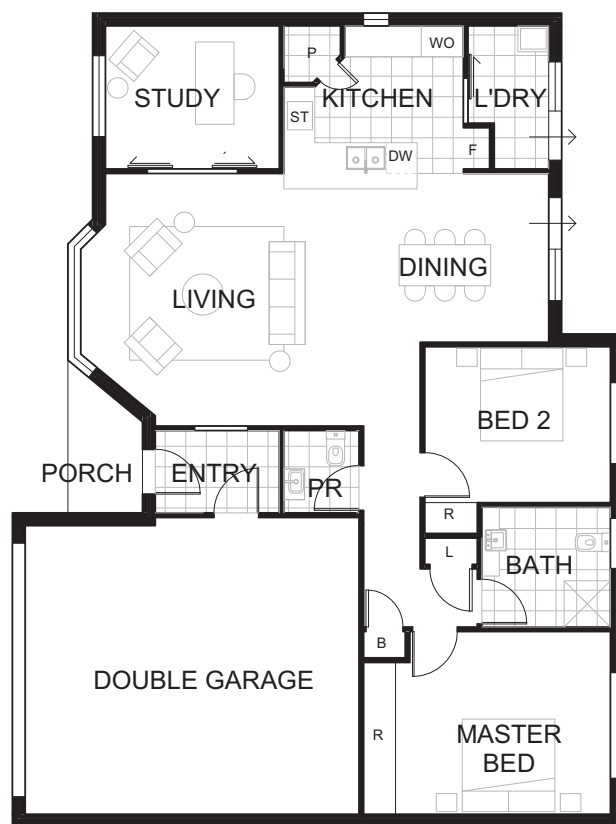
105 SHEOK ROAD

### HOUSE FEATURES

- Fantastic open living arrangement with spacious kitchen and private study.
- Solar energy panel system.
- Attractive rear Patio Area.
- Split system air-conditioning.
- Just refurbished looks a treat!

### APPROX DIMENSIONS

ENTRY	1.6m x 2.8m
LIVING/DINING	8.4m x 4.8m
KITCHEN	2.8m x 3.0m
STUDY	2.8m x 3.3m
MASTER BED	3.5m x 3.6m
BATH	2.3m x 2.5m
PR	2.8m x 1.2m
BED 2	3.0m x 3.3m
LAUNDRY	2.8m x 1.5m
GARAGE	6.1m x 6.4m
TOTAL	164 m <sup>2</sup>



not to scale

### KEY

PR	Powder room	ST	Gas stove
R	Robe	DW	Dishwasher
L	Linen cupboard	P	Pantry
WO	Wall oven	F	Fridge recess

502 - 546 Bussell Highway,  
Busselton WA 6280  
[www.novavillage.com.au](http://www.novavillage.com.au)



MORE LIKE A RESORT THAN A RETIREMENT VILLAGE