

SEMILLON

155 MYRTLE TERRACE

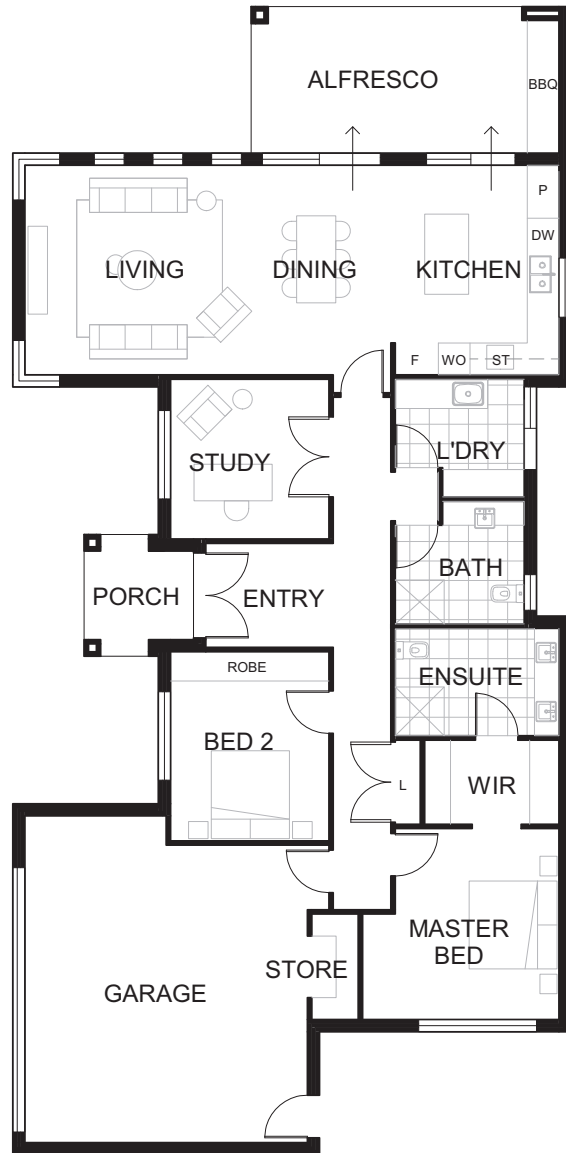
HOUSE FEATURES

- Magnificent presentation
- Reverse cycle ducted air-conditioning
- Fantastic BBQ alfresco area
- Timber Floor boards
- Contemporary open living plan
- Spacious fully equipped kitchen

APPROX DIMENSIONS

ENTRY	2.1m x 2.6m
LIVING / DINING	4.3m x 7.7m
KITCHEN	4.3m x 3.3m
ALFRESCO	3.0m x 5.2m
STUDY	3.2m x 3.2m
MASTER BED	3.9m x 3.9m
ENSUITE	2.2m x 3.4m
WIR	1.7m x 2.7m
BATH	2.0m x 2.7m
BED 2	3.2m x 3.2m
LAUNDRY	2.7m x 1.8m
GARAGE	6.0m x 5.7m
TOTAL	191m ²

502 - 546 Bussell Highway,
Busselton WA 6280
www.novavillage.com.au



not to scale

KEY

WIR	Walk in robe	ST	Gas stove
S	Storage	DW	Dishwasher
L	Linen cupboard	P	Pantry
WO	Wall Oven	F	Fridge recess



MORE LIKE A RESORT THAN A RETIREMENT VILLAGE