

GELORUP

107 SHEOK ROAD

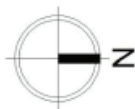
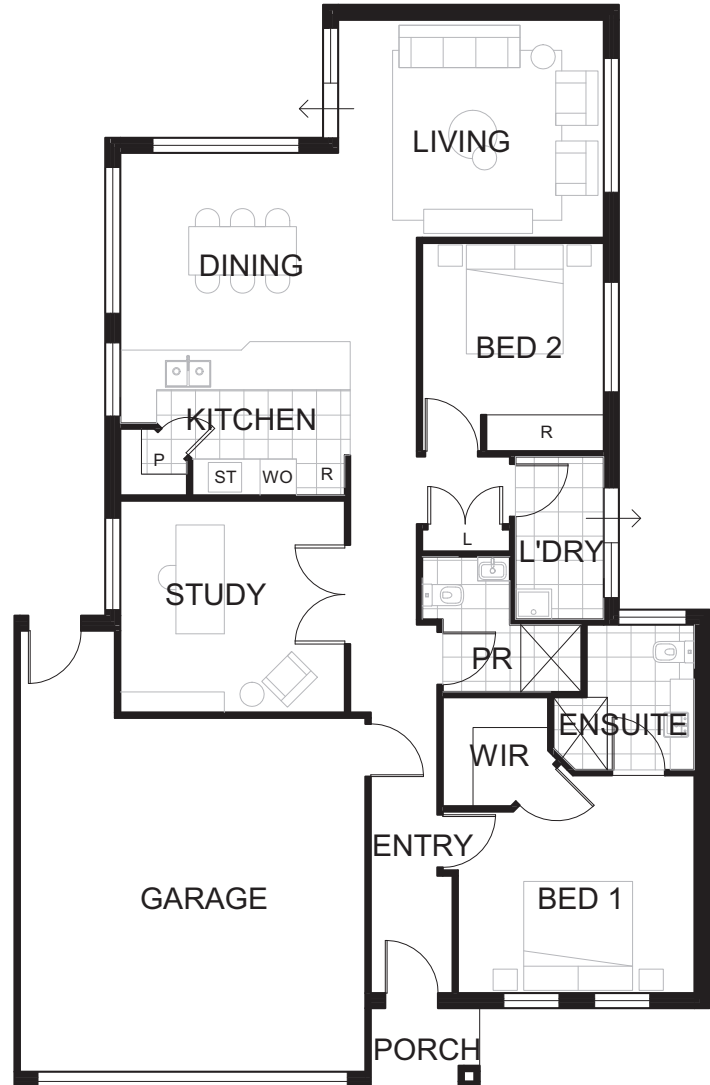
HOUSE FEATURES

- Very popular design with great floor plan.
- Alfresco overlooking attractive bushland.
- Close to pedestrian access to local shopping centre.
- Spacious kitchen with breakfast bar.
- Roof mounted solar energy panel system.
- Large study perfect for craft or hobby room.

APPROX DIMENSIONS

ENTRY	1.9m x 1.4m
LIVING	4.4m x 3.6m
KITCHEN	3.8m x 2.4m
DINING	3.8m x 3.2m
STUDY	3.7m x 3.5m
MASTER BED	3.9m x 3.5m
WIR	1.7m x 1.8m
BATH	2.4m x 2.3m
PR	2.2m x 2.2m
BED 2	2.8m x 3.0m
LAUNDRY	1.5m x 2.7m
GARAGE	5.7m x 5.9m
TOTAL	163m ²

502 - 546 Bussell Highway,
Busselton WA 6280
www.novavillage.com.au



not to scale

KEY

WIR	Walk in robe	ST	Gas stove
S	Storage	DW	Dishwasher
L	Linen cupboard	P	Pantry
WO	Wall Oven	F	Fridge recess



MORE LIKE A RESORT THAN A RETIREMENT VILLAGE