

ASHBROOK

103 SHEOK ROAD

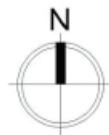
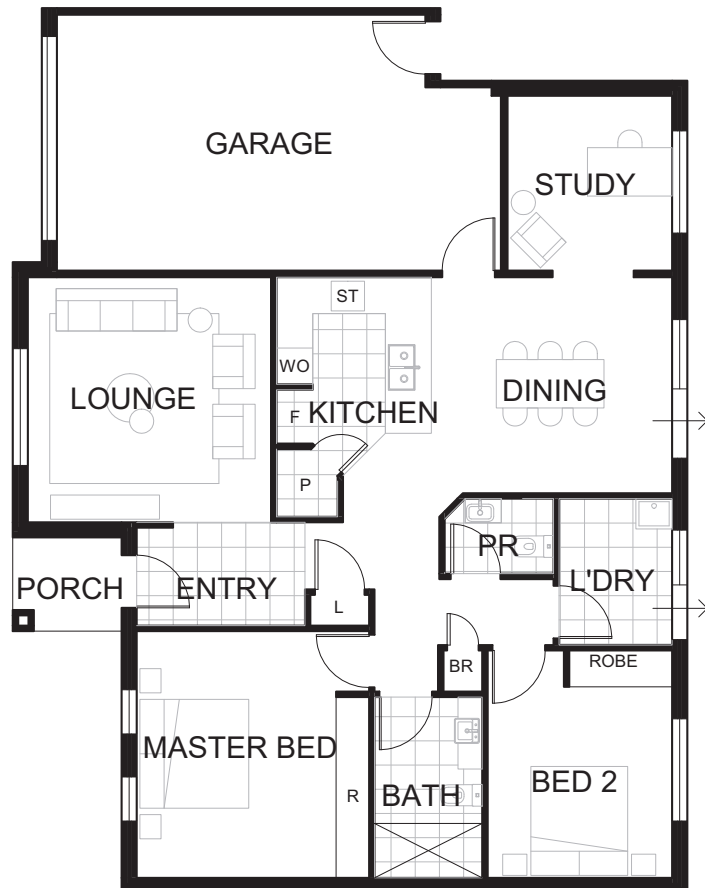
HOUSE FEATURES

- Roof mounted solar energy panels.
- Ducted reverse cycle air-conditioning.
- New refurbished carpets and paint.
- Direct access to kitchen from lock up garage.
- Exterior security roller blind on lounge window.
- Attractive and private rear patio area.

APPROX DIMENSIONS

ENTRY	1.7m x 2.7m
LIVING	4.0m x 4.0m
KITCHEN	2.4m x 4.0m
DINING	3.5m x 4.0m
STUDY	2.9m x 2.7m
MASTER BED	4.1m x 3.3m
PR	1.2m x 1.9m
BATH	1.8m x 3.0m
BED 2	3.2m x 3.0m
LAUNDRY	2.4m x 1.8m
GARAGE	4.1m x 7.3m
TOTAL	146m ²

502 - 546 Bussell Highway,
Busselton WA 6280
www.novavillage.com.au



not to scale

KEY

PR	Powder room	ST	Gas stove
S	Storage	DW	Dishwasher
L	Linen cupboard	P	Pantry
WO	Wall Oven	F	Fridge recess



MORE LIKE A RESORT THAN A RETIREMENT VILLAGE