

Nova VILLAGE

BUSSELTON

QUINDALUP

97 SANDALWOOD WAY

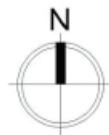
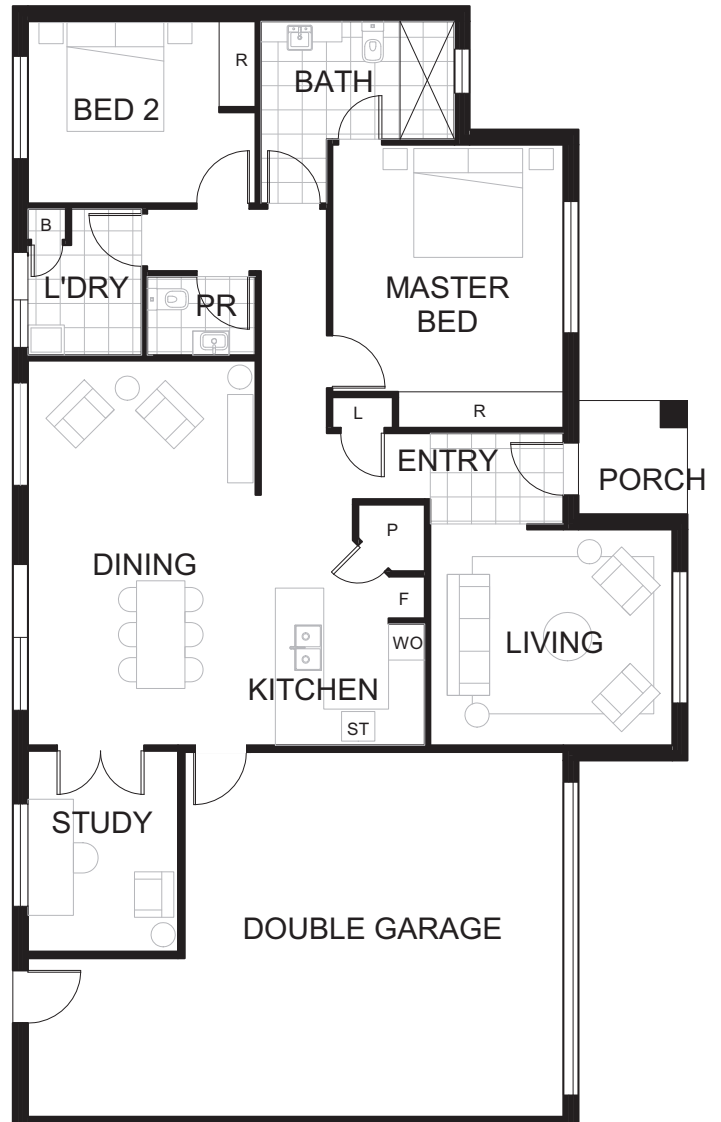
HOUSE FEATURES

- Ducted air-conditioning.
- Timber floors.
- Bowling green views.
- Close proximity to village community facilities.
- Roof mounted solar panel system.

APPROX DIMENSIONS

ENTRY	1.5m x 2.2m
LIVING	3.5m x 4.0m
KITCHEN	2.8m x 2.4m
DINING	6.3m x 3.7m
BED 2	3.0m x 3.2m
MASTER BED	4.0m x 3.8m
PR	1.3m x 1.8m
BATH	1.9m x 3.2m
CRAFT ROOM	3.4m x 2.5m
LAUNDRY	2.3m x 1.8m
GARAGE	5.8m x 6.2m
TOTAL	176m ²

502 - 546 Bussell Highway,
Busselton WA 6280
www.novavillage.com.au



not to scale

KEY

PR	Powder room	ST	Gas stove
R	Robe	DW	Dishwasher
L	Linen cupboard	P	Pantry
WO	Wall Oven	F	Fridge recess



MORE LIKE A RESORT THAN A RETIREMENT VILLAGE